

A real town

Known for its unique blend of natural beauty and cultural excellence, Aspen is a vibrant year-round resort . . . and a real town with a rich heritage dating back to its first heyday as a silver mining mecca in the late 1800's.

Condominium hotel

The North of Nell offers visitors to Aspen a rare opportunity to stay in a private condominium situated right at the base of Aspen Mountain.



As a condominium hotel, the North of Nell offers a wide variety of accommodations and many services usually encountered only in a hotel setting. Amenities include complimentary underground parking with elevator access, daily maid service* and laundry and ski storage facilities on every floor.

A small, professional staff provides prompt attentive service as part of our concerted effort to provide each guest with the finest possible experience in Aspen.

** except on holidays*

The perfect spot

At the base of the Little Nell ski run between the Little Nell Hotel and the Ritz-Carlton, guests staying at the North of Nell are just steps from the Silver Queen Gondola.



Stay with us and enjoy the best of both worlds — the serene beauty of the mountains and the excitement and convenience of staying in the heart of Aspen. Hiking, skiing, rafting, ice-skating, biking and snow-shoeing are accessible just outside. Renowned restaurants and specialty shops are just around the corner. Music, dance, theater and noted historic landmarks are also an easy walk. If you prefer to ride, Aspen's award-winning complimentary shuttle service is just across the street!

All year round . . .



Reservations & Information
800/481-1510

Room with a view

Our comfortable and unusually spacious accommodations include one, two and three bedroom condominiums rated economy, standard and deluxe. Privately-owned, each fully furnished unit is individually decorated, refreshingly unique. All feature fully-equipped kitchens, fireplaces and sliding glass doors that lead to private balconies. Sleeping and living areas offer breathtaking views of the surrounding mountains and of Aspen itself. In addition, most units are excellent for small groups who wish to meet or entertain.

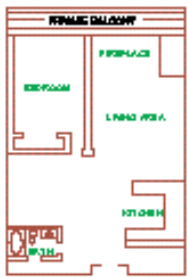


An Aspen tradition

Our guests come back year after year . . . to breathe the mountain air, attend conferences, test their endurance, explore the shops — and to relax.

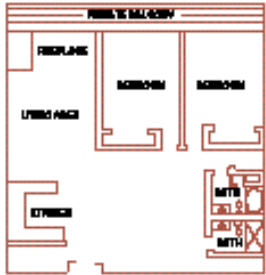
This year, we look forward to seeing you!

*Call now for a
calendar of upcoming
Aspen events.*



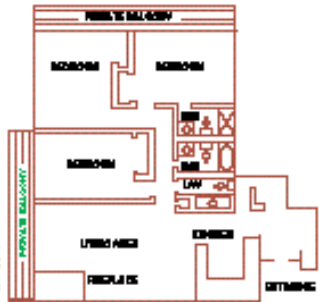
1 bedroom
1 bath
900 sq. ft.

Wake up to
the swish of skiers



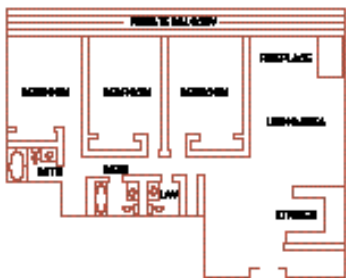
2 bedroom
2 bath
1342 sq. ft.

carving fresh tracks,
the aroma of food being



3 bedroom
2 1/2 bath
1250 sq. ft.

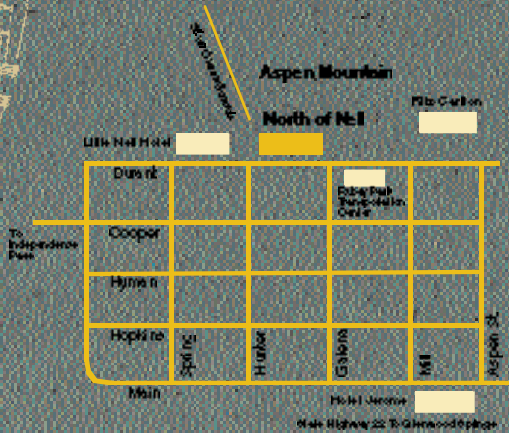
prepared in Aspen eateries,
the sun streaming over



3 bedroom
2 1/2 bath
1500 sq. ft.

Independence Pass.
Wake up to Aspen
Mountain at the
North of Nell.

All condominium units offered herein are independently owned. As a result, the North of Nell, acting as rental agent, must reserve the right to change accommodations up to and including the day of arrival.



NORTH OF NELL
ASPEN'S
CONDOMINIUM HOTEL
AT THE BASE OF
THE MOUNTAIN

NORTH OF NELL
555 E. Durant • Aspen, Colorado 81611
800/481-1510 970/925-1510
fax 970/ 925-1550

